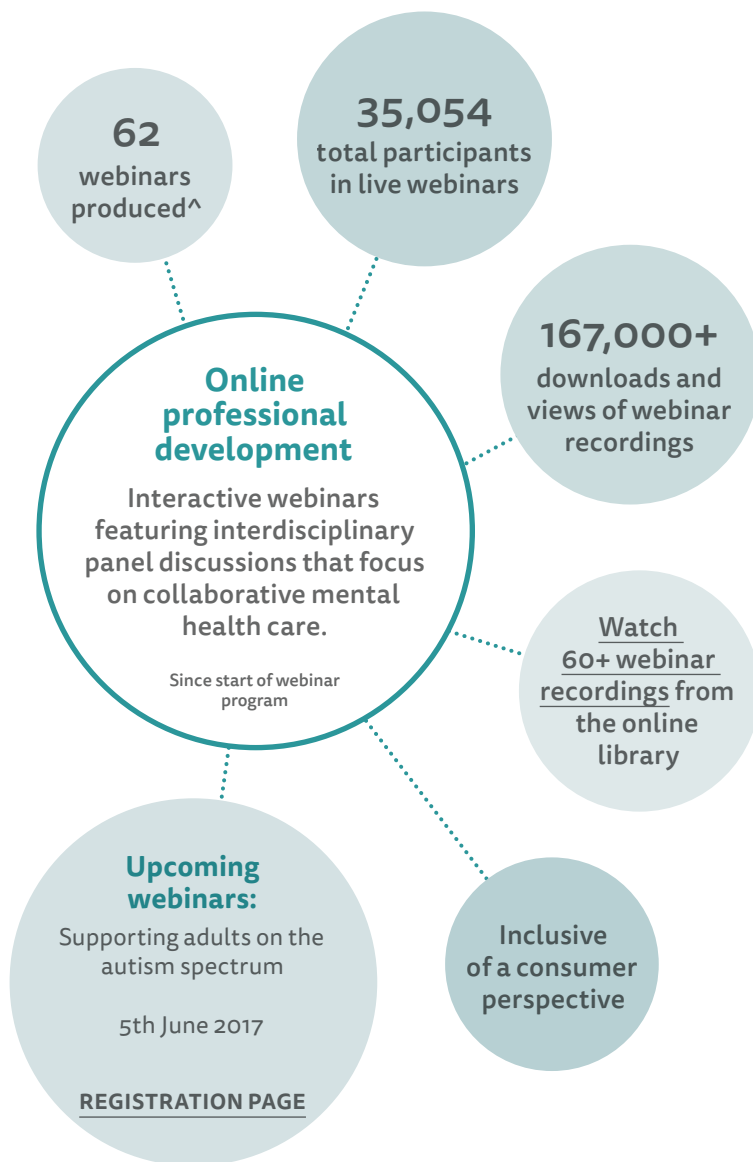


# Project Update

APRIL 2017

Thinking nationally,  
acting locally to improve  
interdisciplinary practice  
and collaborative care  
in mental health  
through two  
core programs.



**MHPN is supported by its key partners, including:**

- Royal Australian & New Zealand College of Psychiatrists
- Australian Psychological Society
- Occupational Therapy Australia
- Royal Australian College of General Practitioners
- Australian College of Mental Health Nurses
- Australian Association of Social Workers

^ Inclusive of MHPN partnership webinars  
Note: Based on 83% returned data 30/4/17

**Contact MHPN**

P: 1800 209 031  
E: [contactus@mhpn.org.au](mailto:contactus@mhpn.org.au)  
W: [mhpn.org.au](http://mhpn.org.au)