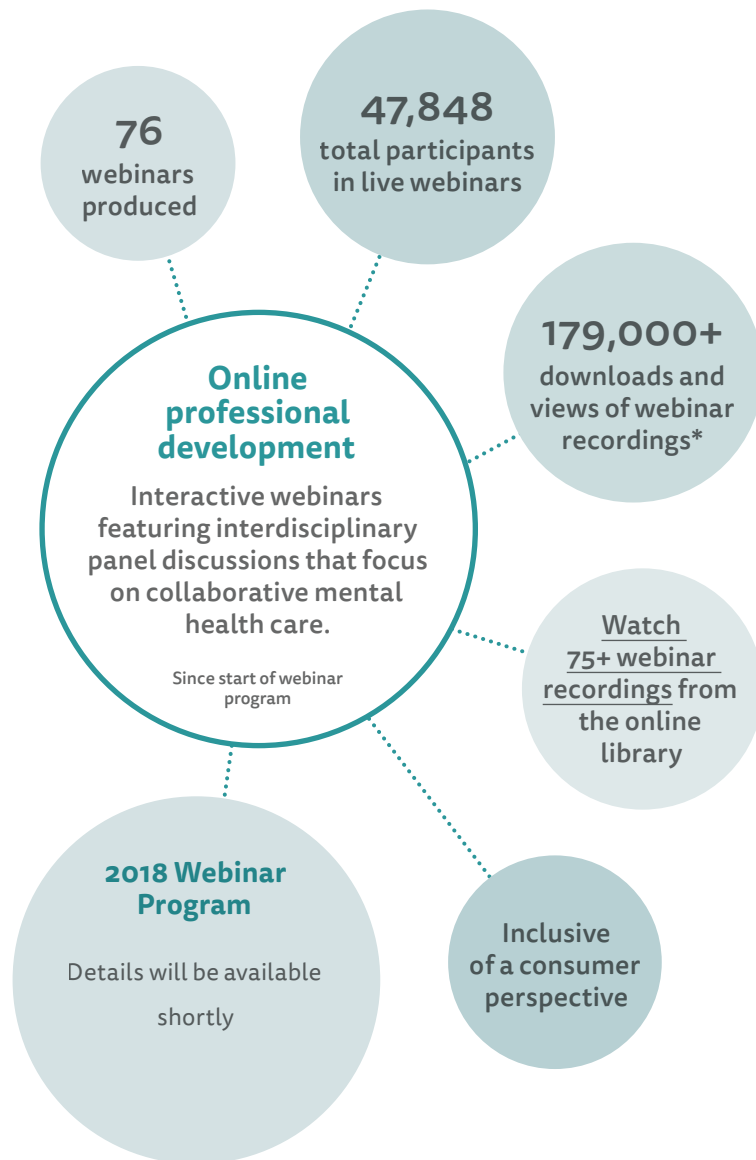


Project Update

NOVEMBER 2017

Thinking nationally,
acting locally to improve
interdisciplinary practice
and collaborative care
in mental health
through two
core programs.



MHPN is supported by its key partners, including:

- Royal Australian & New Zealand College of Psychiatrists
- Royal Australian College of General Practitioners

- Australian Psychological Society
- Australian College of Mental Health Nurses

- Occupational Therapy Australia
- Australian Association of Social Workers

^ Inclusive of MHPN partnership webinars

Note: Based on 77% returned data 7/12/17

Contact MHPN

P: 1800 209 031
E: contactus@mhpn.org.au
W: mhpn.org.au