

Supporting people living with borderline personality disorder

Tuesday, 21st March 2017, 7:15 – 8:30pm AEDT

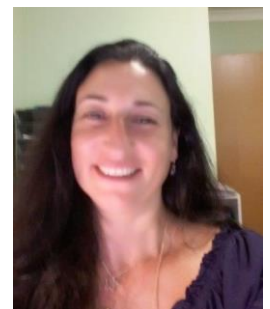
Professor Andrew Chanen (Psychiatrist)

Andrew Chanen is Deputy Research Director and Head of Personality Disorder Research at Orygen, the National Centre of Excellence in Youth Mental Health, and a Professorial Fellow at the Centre for Youth Mental Health, The University of Melbourne. He is also Director of Clinical Services at Orygen Youth in Melbourne, Australia. Andrew's clinical, research and knowledge translation interests lie in the prevention and early intervention for severe mental disorders, principally personality disorder, along with mood and psychotic disorders. He established and directs the Helping Young People Early (HYPE) program, a clinical, research and knowledge translation program investigating the understanding of and prevention and early intervention for severe personality disorder, particularly borderline personality disorder in youth. HYPE has been recognised with several awards for advancing healthcare. Andrew currently receives grant funding from the National Health and Medical Research Council (NHMRC), has over 100 scientific publications and a forthcoming book, *Early Intervention for Borderline Personality Disorder*, to be published by Cambridge University Press. Andrew serves on several Editorial Boards and on a number of expert mental health groups. He is the Past President of the International Society for the Study of Personality Disorders (ISSPD).



Janina Tomasoni (Psychologist)

Janina is the senior clinical psychologist at Spectrum and discipline senior for Statewide Services (SWS). She has been with the Service for 12 years. During this time, Janina has developed extensive experience and specialisation in assessing and treating individuals with complex personality disorder that have difficulties engaging in psychotherapy. During her tenure she has provided a range of clinical, consultancy,



training and supervision to a range of stakeholders including Victorian Public Mental Health Services, Emergency Services, Acute Hospital settings, Victorian Forensic Mental Health Services, Victorian criminal justice system and Non-Government Agencies. A particular area of focus and interest has been developing ways of measuring, assessing and responding to risk to self and others for consumers diagnosed with borderline personality disorder. Currently Janina's clinical activities at Spectrum include coordinating Spectrum's Assessment Unit and undertaking comprehensive assessments and delivering DBT treatment. She also develops and delivers training, and provides supervision to SWS psychologists and psychology students. During her career Janina has presented at national and international conferences on a range of areas relating to personality disorder, dual disability and forensic ID. In addition, Janina has over the last 17 years run her own private practice and provides psychological treatment and supervision. She is also a psychologist member of the Victorian Forensic Leave Panel.

Ellen Sinclair (Mental Health Nurse)

Ellen Sinclair has over 30 years' experience as a Registered Nurse and for the majority of this time has specialised in mental health. A former CNC in Psychiatric Rehabilitation, she holds an undergraduate degree in Nursing and a Master of Mental Health Nursing from the University of Newcastle. Her professional activities have included part-time teaching at the University of Newcastle and co-authorship of an article in a peer reviewed journal reporting on new graduate nurses commencing work in mental health services. More recently she has contributed as an author to chapters on family violence and the mental health of young people in a soon to be released textbook 'Mental Health Psychiatric Nursing: Collaborations in Care' (Pearson Publishing, expected publication date late 2017). Ellen is a member of the Australian College of Mental Health Nurses. Currently she works as a Registered Nurse in a private psychiatric unit in the Newcastle area and as a Mental Health Practice Nurse, in a General Practice, in the same region. As part of her work, Ellen is involved in the assessment and care of people with Borderline Personality Disorder.



Mental Health
Professionals' Network

Emirates House
Level 8
257 Collins Street
Melbourne
VIC 3000

postal
PO Box 203
Flinders Lane
VIC 8009

email
contactus@mhpnp.org.au

telephone
1800 209 031

www.mhpnp.org.au

Dr Christopher Wurm (GP)

Chris Wurm studied Medicine and German at University of Adelaide, and then trained as a GP and studied Logotherapy and Existential Analysis in Vienna. He has worked in a Community Mental Health team and the Drug and Alcohol Resource Unit, Royal Adelaide Hospital. He is now Senior Consultant, Sefton Park Primary and Ambulatory Care; GP Psychotherapist and Addiction Physician in private practice at Florey Healthcare, Pooraka and has been involved with the development of South Australia's Borderline Personality Disorder Action Plan.



Chris holds an honorary position as Visiting Fellow, Discipline of Psychiatry, University of Adelaide. He is the author of two Book Chapters, Co-editor of a book translated from German to English. He has been invited to run workshops and presentations on Interpersonal Psychotherapy and Existential Psychotherapy in Adelaide, Sydney, Jakarta, Vancouver, Iowa City and Auckland.

Facilitator: Associate Professor Rachel Rossiter (Nurse Practitioner)

Rachel began her nursing career as a generalist in 1971 before working in primary health care in Madagascar and the Solomon Islands. Upon returning to Australia, she has gained extensive experience working in clinical, teaching and research settings in public health, general practice and mental health settings in urban and rural areas of NSW. Advanced practice roles in primary health care, psychotherapy (Dialectical Behaviour Therapy) and community mental health provide the foundation for her work as an educator and researcher. Last year she spent six months as an invited academic at the University of Sharjah in the United Arab Emirates. Rachel is a fellow of the Australian College of Mental Health Nurses and a peer reviewer for the Mental Health Nurse Credentialing program. Her research experience includes qualitative research projects focusing on improving services provided to people with borderline personality disorder. As Associate Professor of Nursing (Nurse Practitioner), Rachel's academic focus is on preparing postgraduate students to step up to advanced practice roles with well-developed problem clinical reasoning skills and the clinical capabilities essential to function safely in a rapidly changing healthcare environment.

